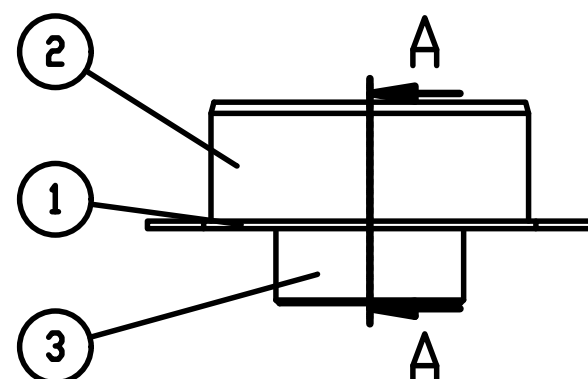
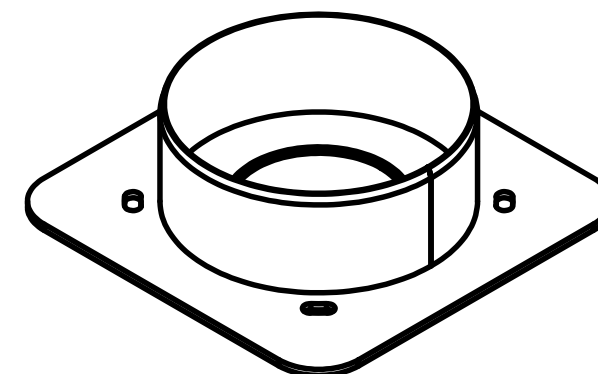
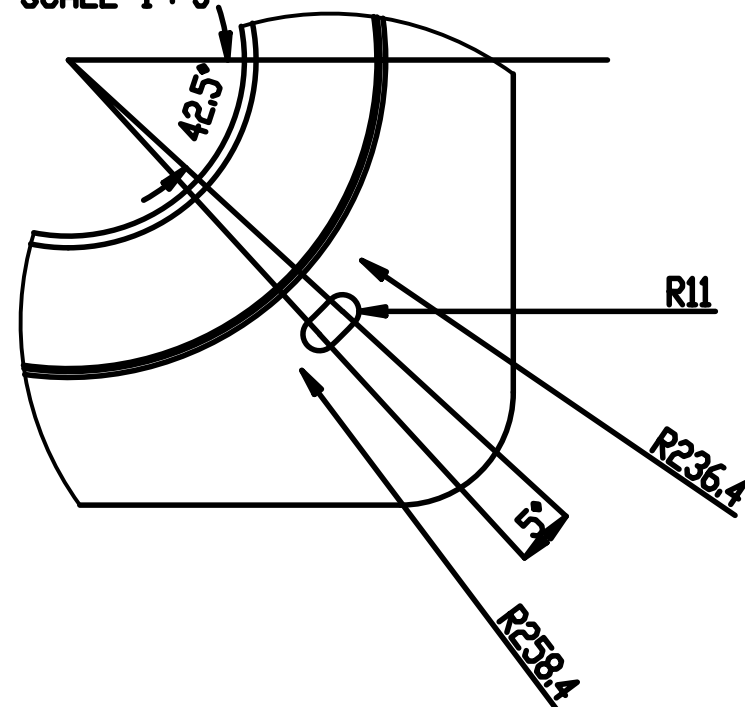
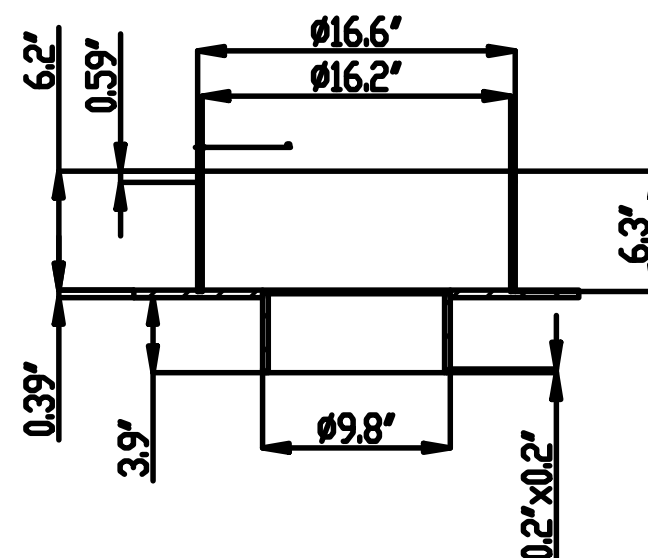


DETAIL B

SCALE 1 : 5



SECTION A-A



ITEM NO.	PART NUMBER	DESCRIPTION	QTY.
1	20-1083	New Aquacell top adapter base plate	1
2	19-3070	Q-Bic Plus (Tegra 600 adapter)	1
3	20-1272	New AquaCell (top adapter)	1

Note A:
Material:
PE
Contour files:
20-1083_Contour base plate.DXF
20-1084_Flat pattern.DXF

A	Changed to product released + drw update	14-05-20	MBA	MSC
0	First Edition	01-05-20	MBA	MSC
Rev.	Description	Date	Drawn	Checked
1	PRODUCT RELEASED	14-05-20	MBA	MSC
2	AquaCell (Top adapter)	14-05-20	MBA	MSC
3	Product drawing	14-05-20	MBA	MSC
4	20-1208	14-05-20	MBA	MSC



ISO 2768-n
This document contains confidential information of Wavin Technology & Innovation BV. It is not to be distributed outside the company or its subsidiaries. If you are not an authorized user, you are not allowed to use this document. In writing by Wavin. All rights are reserved in Wavin Technology & Innovation BV.