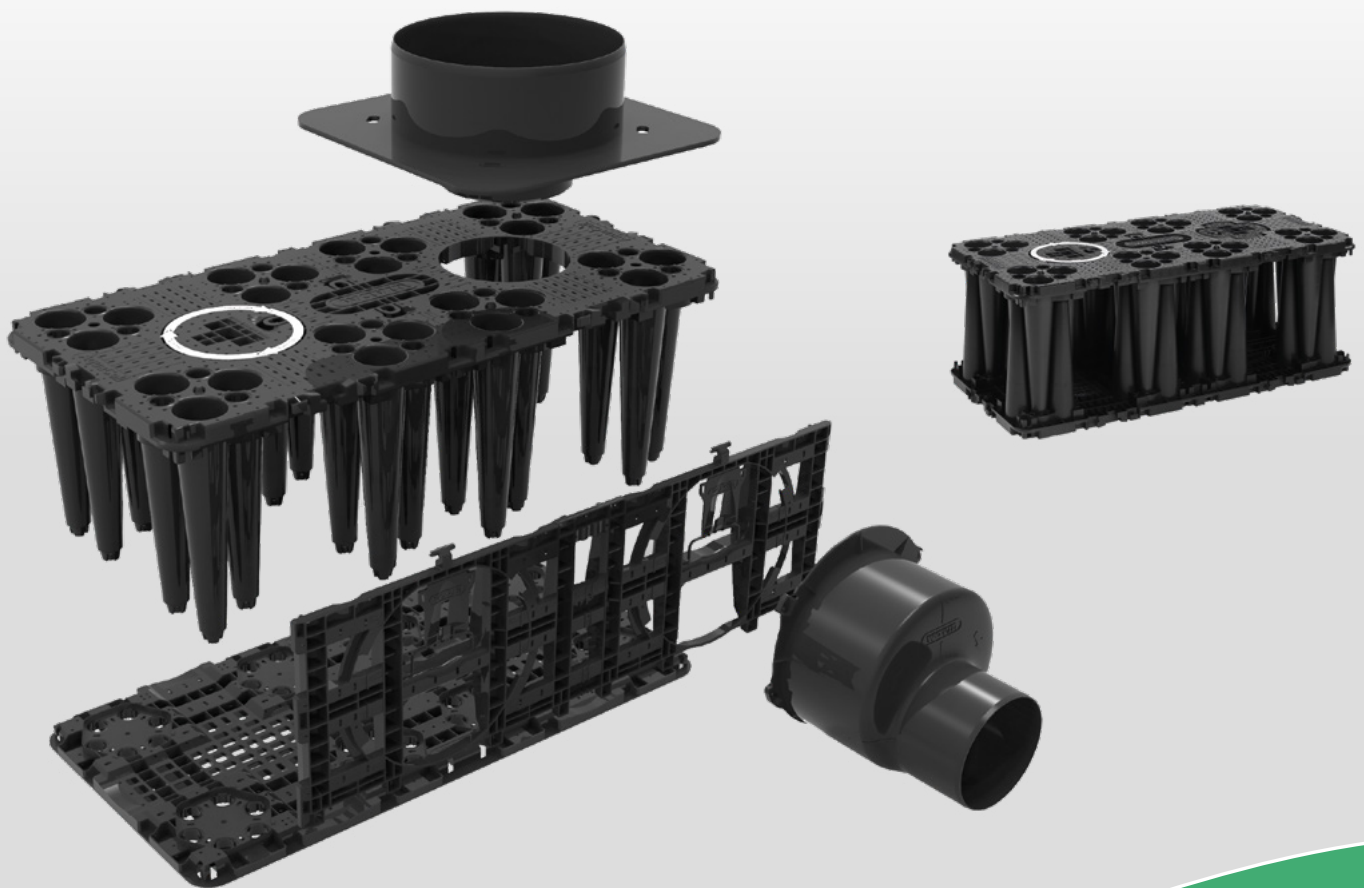


Datasheet

Wavin AquaCell

Stormwater Management System



An Orbia Building &
Infrastructure business.

Wavin AquaCell

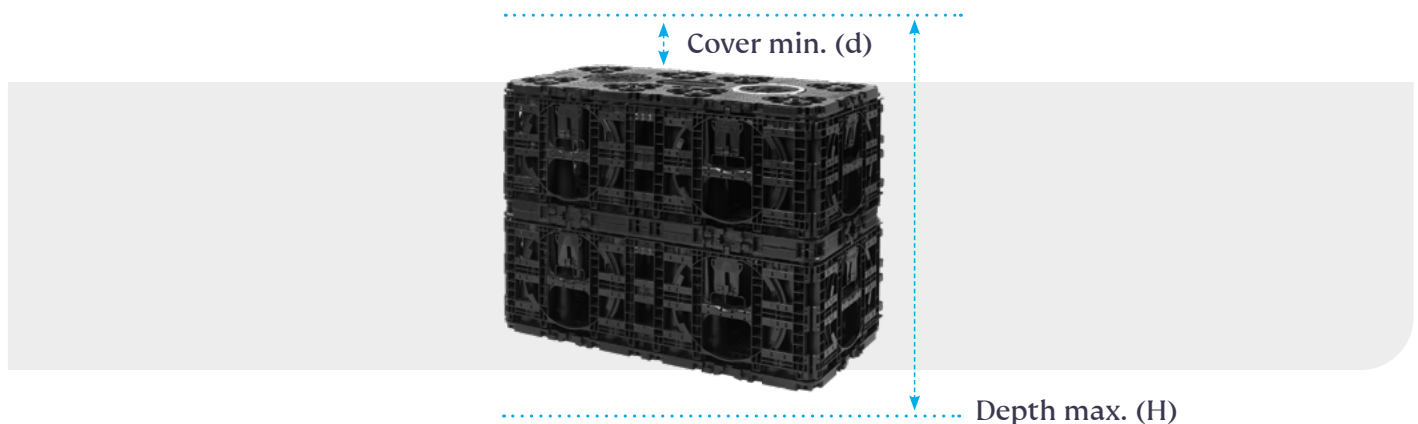
100% recycled module polypropylene system for rainwater management.

Wavin's AquaCell is a high-tech modular system designed for the temporary storage of rainwater with a volumetric ratio equal to 96%, equivalent to 10 cubic feet of storage for each base unit. The system allows for the construction of underground rainwater retention tanks to retain and detain surface runoff and efficiently mitigate the effect of potential floods through the infiltration and reuse of stored water with pumping systems. The modular system is easy and quick to install and allows for inspection and maintenance, making it the ideal solution for the construction of sustainable projects, with a wide range of applications including residential, commercial, industrial, and infrastructure projects.

Technical Specifications

	Raw material	100% recycled polypropylene	
General	Color	Black	
	Vertical inspection access	10in	
	Dimensions (Length x Width x Height)	48x24x17 (LxWxH)	
Base Unit	Without Baseplate Attached	76 gal / 10.25 cf	
	With Baseplate Attached	73 gal / 9.74 cf	
	Void Rate (Varies by layer/side plates added)	94% - 96%	
	Weight	24lbs	
	Pipe Connections	6in, 8in, 10in, 12in	
Bottom Plate	Dimensions (Length x Width x Height)	48x24x1.5 in (LxWxH)	
	Weight	8 lb	
Side Plate	Dimensions (Length x Width x Height)	45.5x15x2 in (LxWxH)	
	Weight	5 lb	
Top Adaptor (Inspection and Maintenance)	Dimensions	10/12in.	
	Weight	3lbs	
	Dimensions	10/16 in.	
	Weight	11lbs	
Connection Adaptor 8in - 12in	Dimensions (Length x Width x Height)	14x14x12in	
	Weight	3lbs	
Minimum (d) / Maximum (H) cover depth * See diagram	Type of load	Regular Version	Extra Strong Version
	H-10 Traffic Loading [in/ft]	d=12in. / H= 14.4ft	d=12in. / H=26.2 ft
	HS-20 Traffic Loading [in/ft]	d=24 in. / H=14.4ft	d=18 in. / H=26.2ft
	HS-25 Traffic Loading [in/ft]	d=32in. / H=14.1 ft	d=22in. / H=26.1 ft.

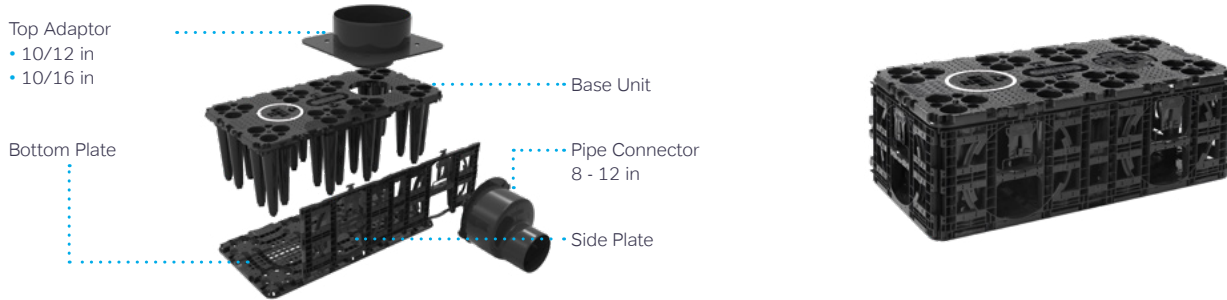
Note: Each project requires a stress analysis to ensure the stability of the system based on the acting loads, soil type, and water table involved. Wavin recommends a minimum cover over the top of the tank of 12 inches. For use in the regular or extra strong versions, or if you need further information, contact the technical marketing team in your country.



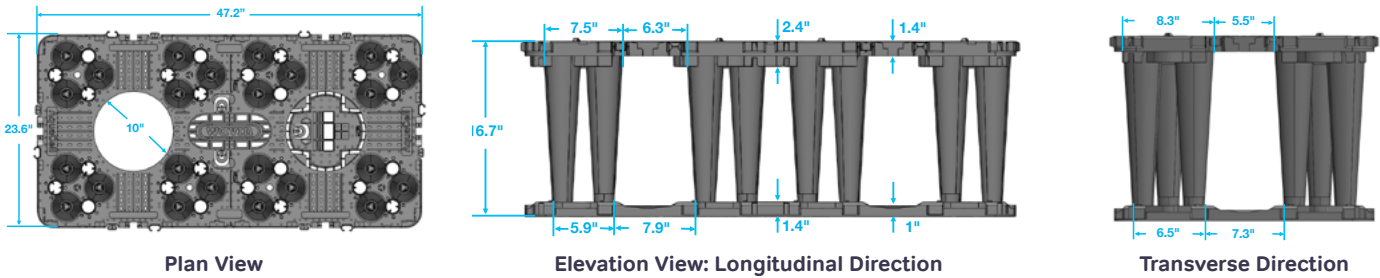
Product Datasheet

AqueCell requires no additional accessories. It is manually assembled through components that allow the cisterns or below-ground tanks to be configured per the technical specifications of each proposed design.

Wavin AquaCell



Module Dimensions



System Versions



Regular Configuration



Extra Strong Configuration

Storage capacity

Regular Configuration	
Gross Volume / (without bottom plate)	10.25 cf
Net volume / (without bottom plate)	9.74 cf
Void Ratio / (varies by layer/side plates added)	94% - 96%
Extra strong Configuration	
Gross Volume	11.70 ft ³
Net Volume	10.84 ft ³
Void Ratio / (without bottom plate)	92.7%

Urban Climate Resilience

© 2024 Wavin Wavin reserves the right to modify product specifications without prior notice. Due to its program of continuous product development, technical specifications may change. Installation must comply with the installation instructions.